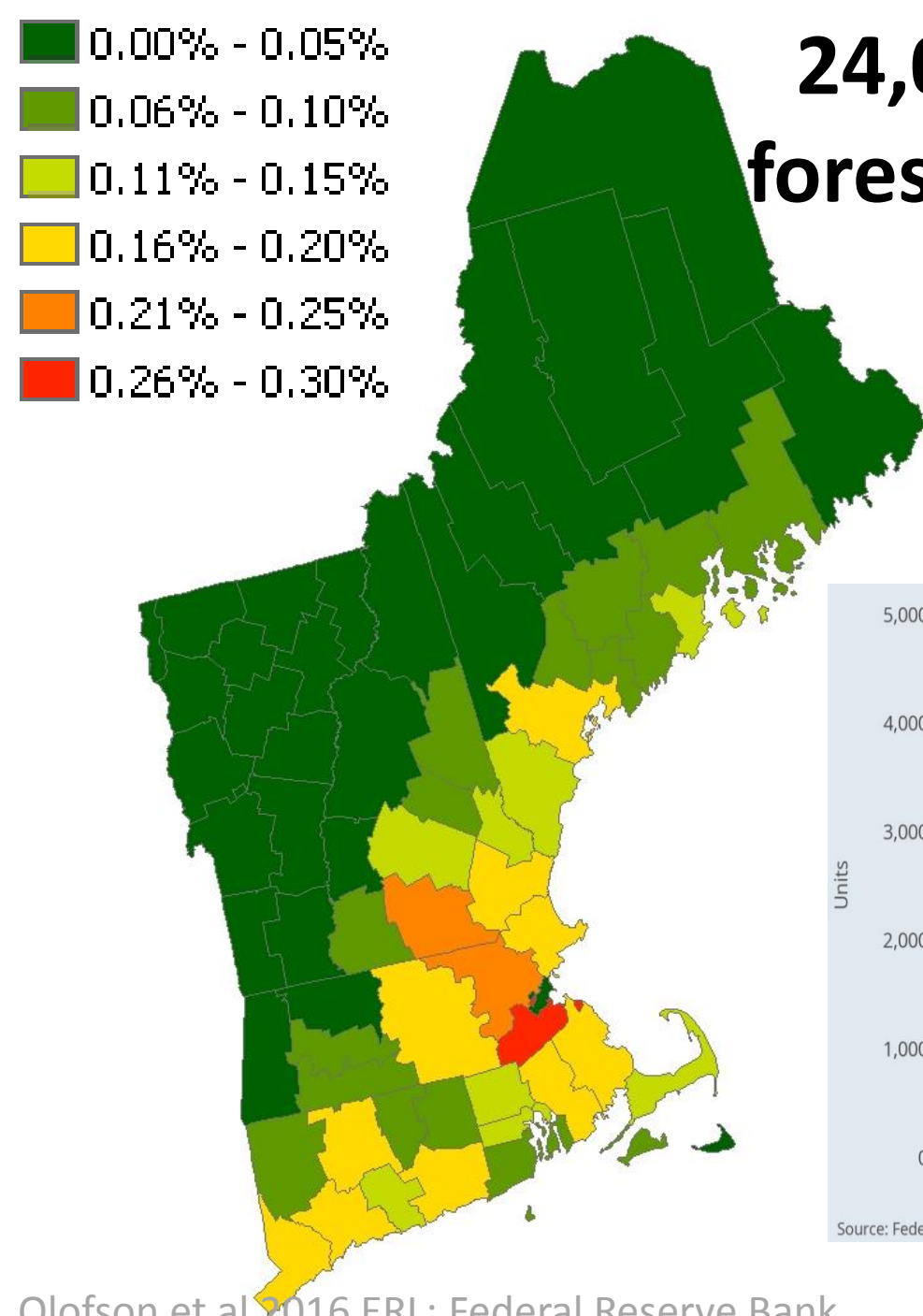
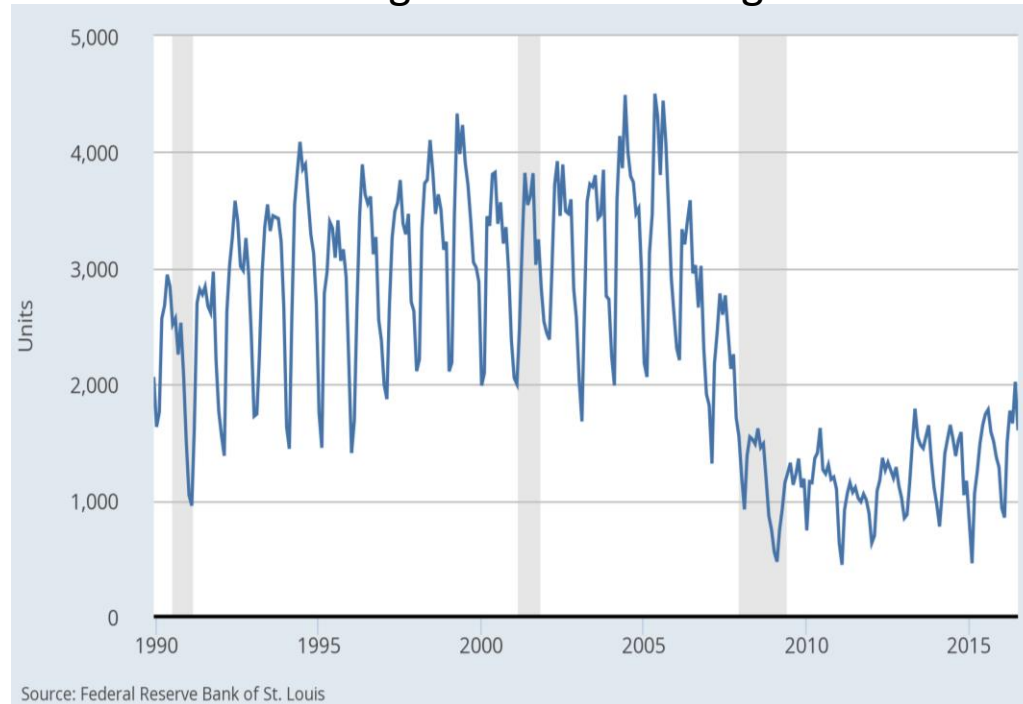


# 24,000 acres per year of forest lost to development since 1985



Housing Starts in New England





**John D. Aber** *University of New Hampshire*

**Charles V. Cogbill** *Sterling College, Vermont*

**Elizabeth A. Colburn** *Harvard Forest, Harvard University*

**Anthony W. D'Amato** *University of Minnesota*

**Brian M. Donahue** *Brandeis University*

**Charles T. Driscoll** *Syracuse University*

**Aaron M. Ellison** *Harvard Forest, Harvard University*

**Timothy J. Fahey** *Cornell University*

**David R. Foster** *Harvard Forest, Harvard University*

**Brian R. Hall** *Harvard Forest, Harvard University*

**Clarisse M. Hart** *Harvard Forest, Harvard University*

**Malcolm L. Hunter** *University of Maine, Orono*

**Lloyd C. Irland** *Yale University*

**William S. Keeton** *University of Vermont*

**David B. Kittredge** *University of Massachusetts*

**Kathleen F. Lambert** *Harvard Forest, Harvard University*

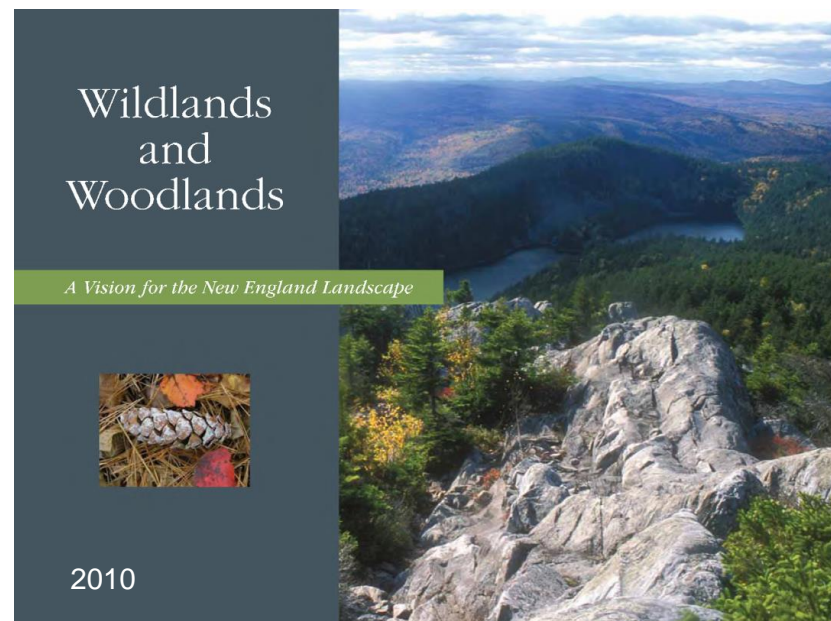
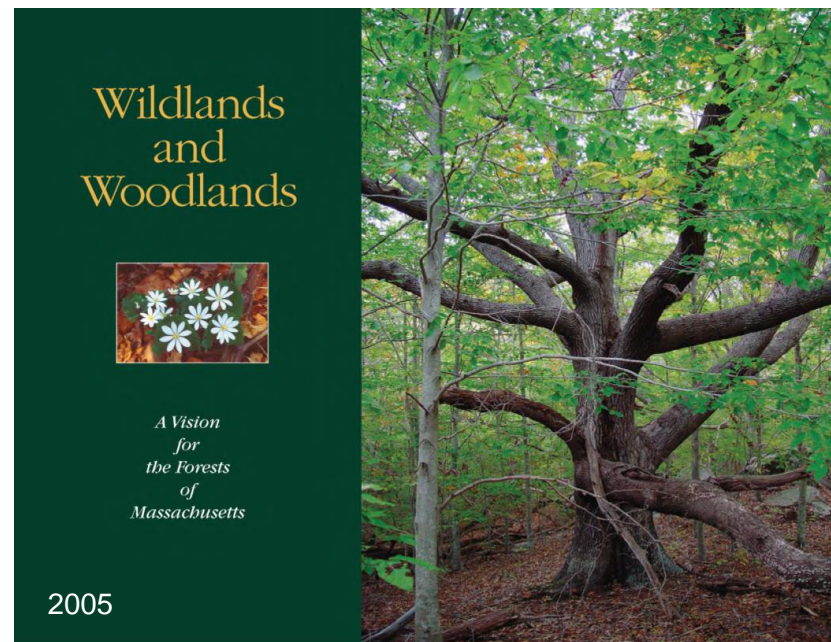
**James N. Levitt** *Harvard Forest, Harvard University*

**Robert J. Lillieholm** *University of Maine*

**David A. Orwig** *Harvard Forest, Harvard University*

**Jonathan R. Thompson** *Smithsonian Institution*

# Wildlands and Woodlands

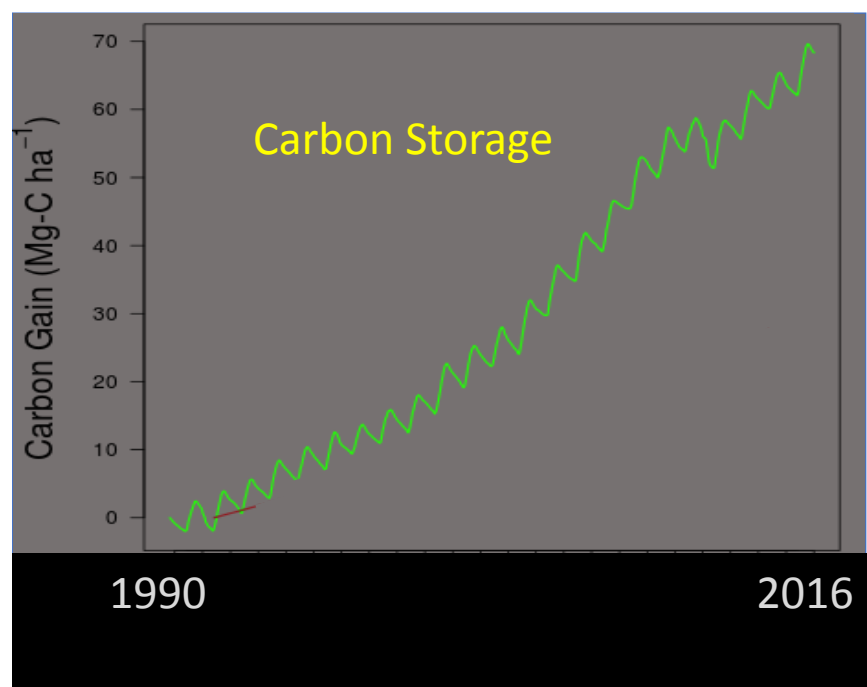
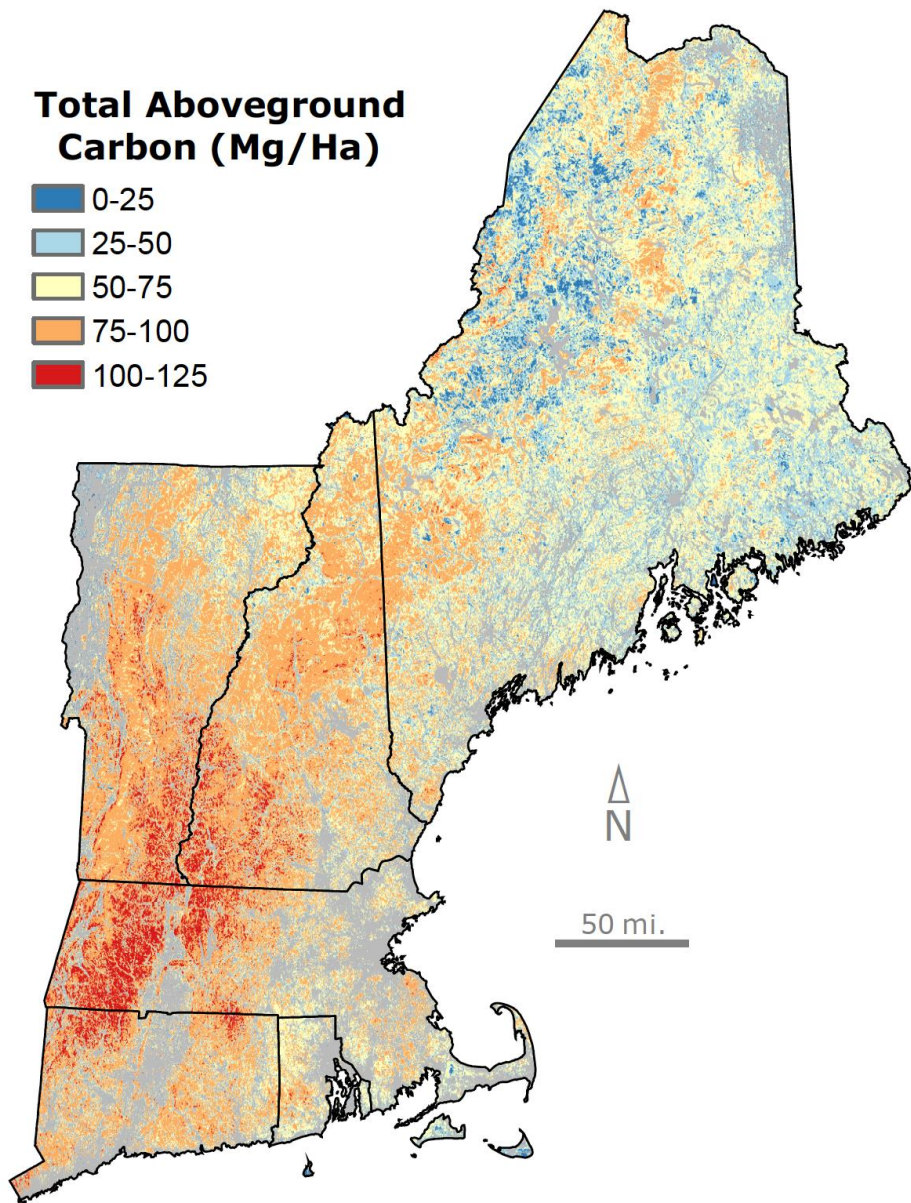
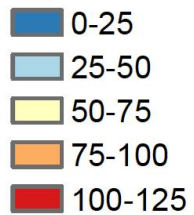






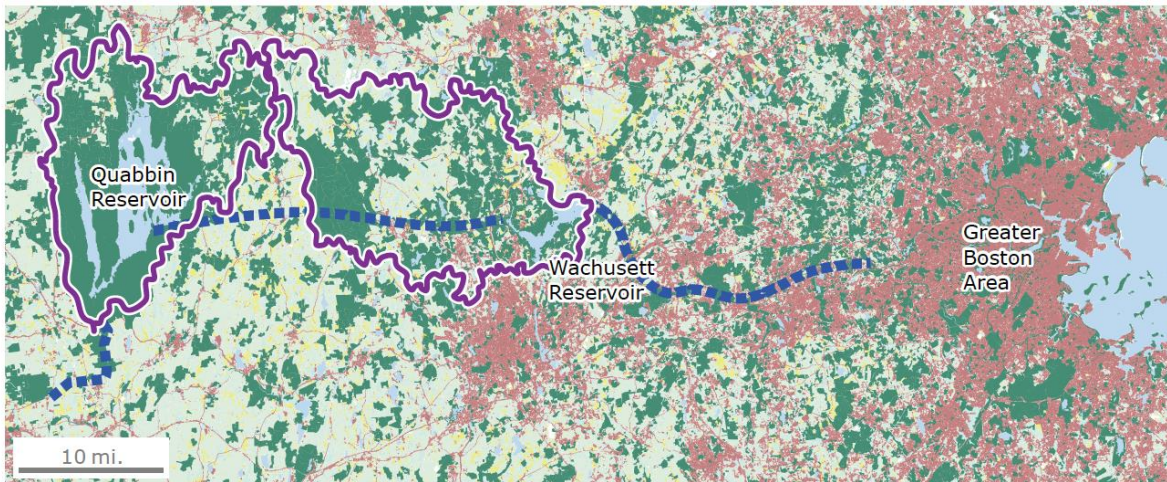


### Total Aboveground Carbon (Mg/Ha)





# Forested Watersheds Delivering Clean Water to Metropolitan Areas



Quabbin and Sebago System Watersheds

Water Transmission Route

Protected Open Space

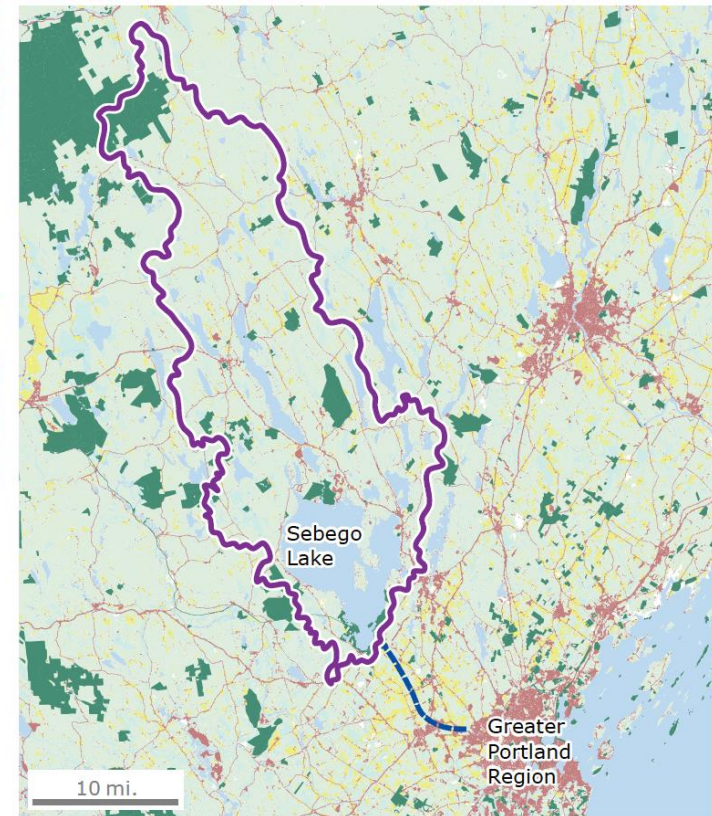
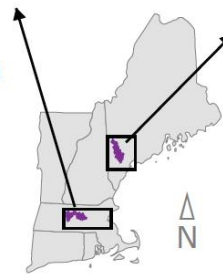
Farm or Grassy Area

Developed

Forest

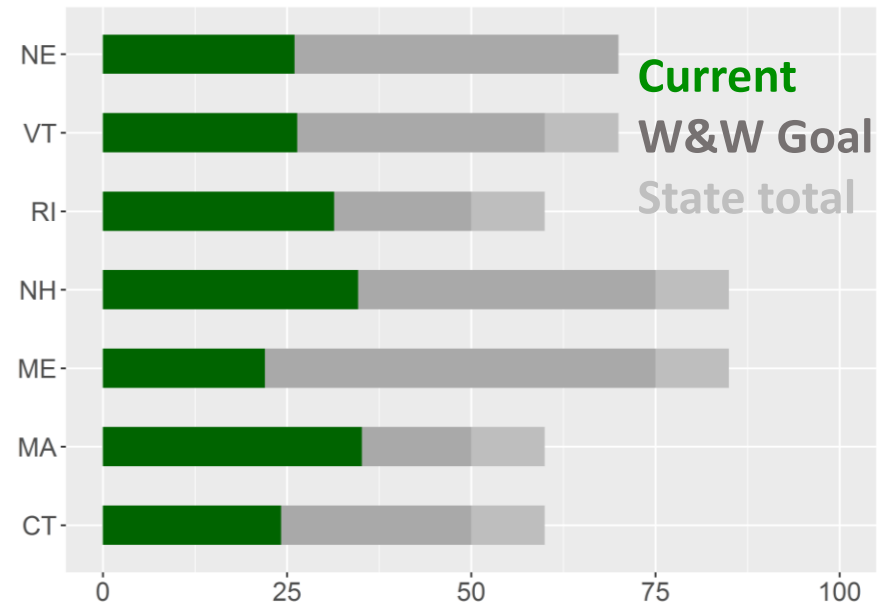
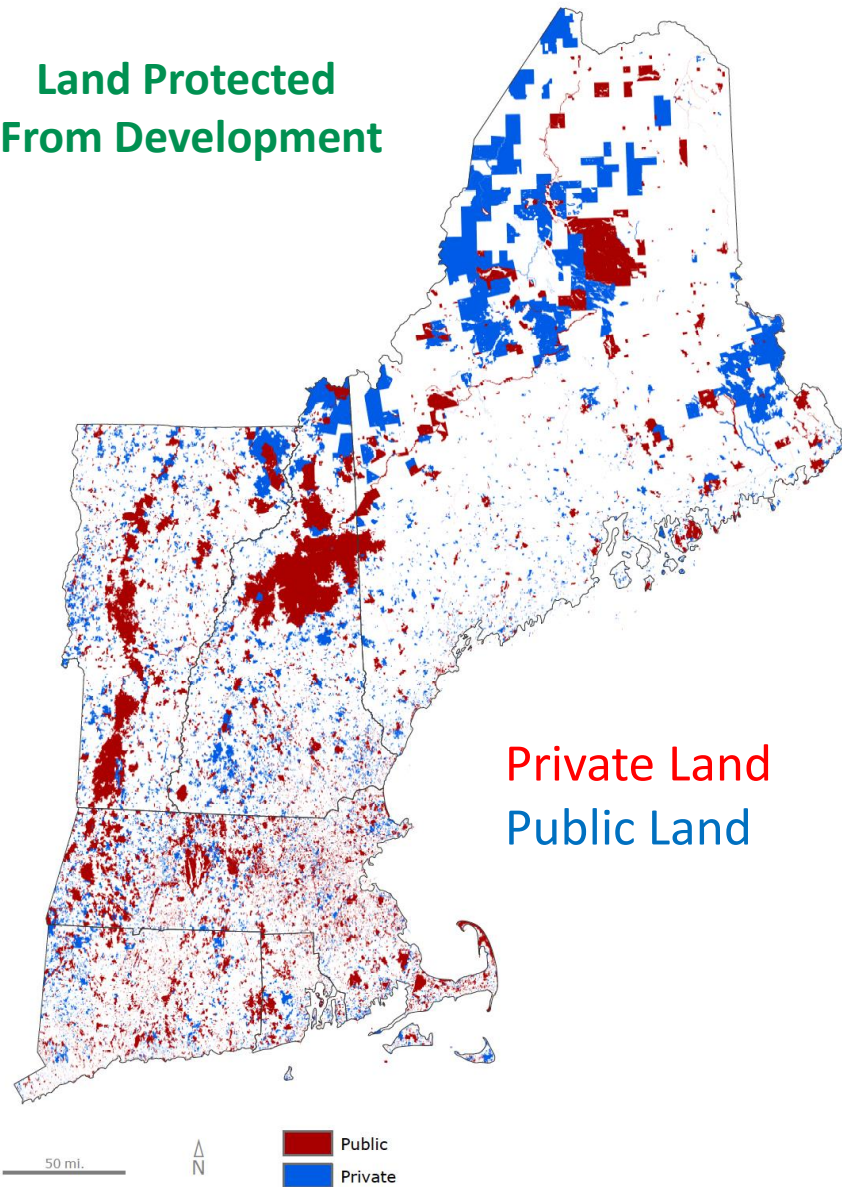
Water

Wetland



# 9.4m acres are protected from development

Land Protected  
From Development

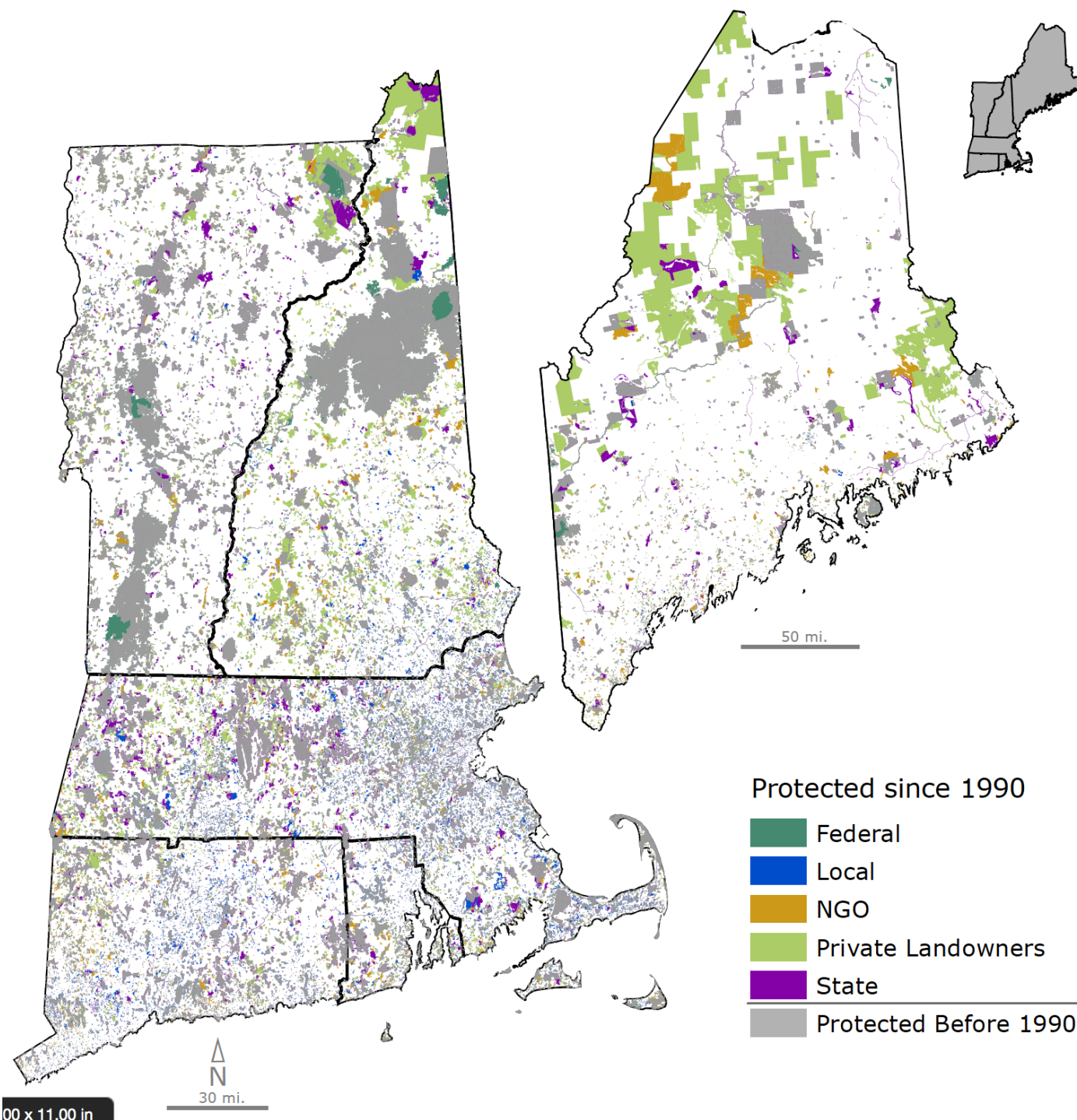


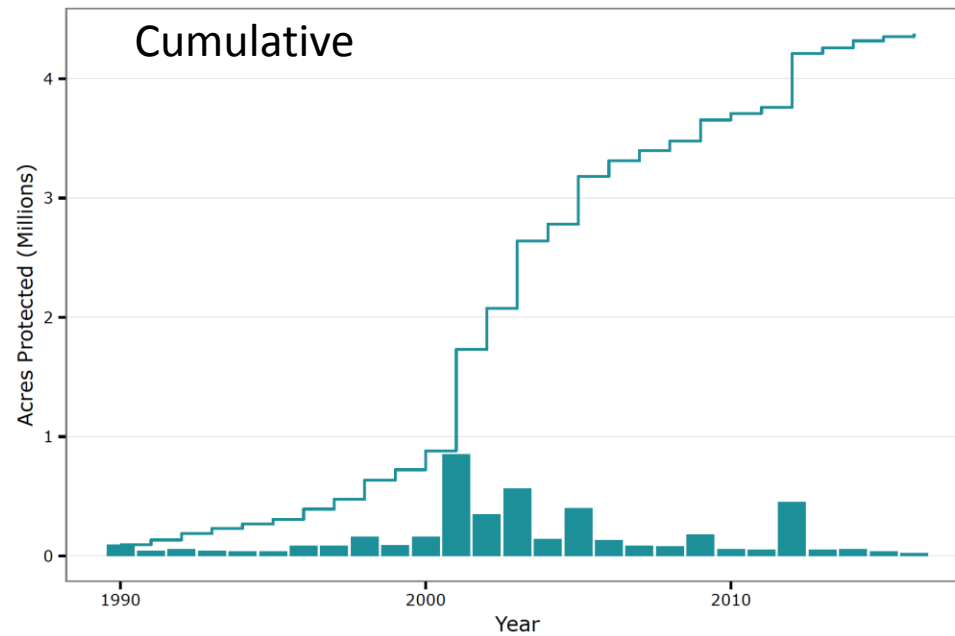
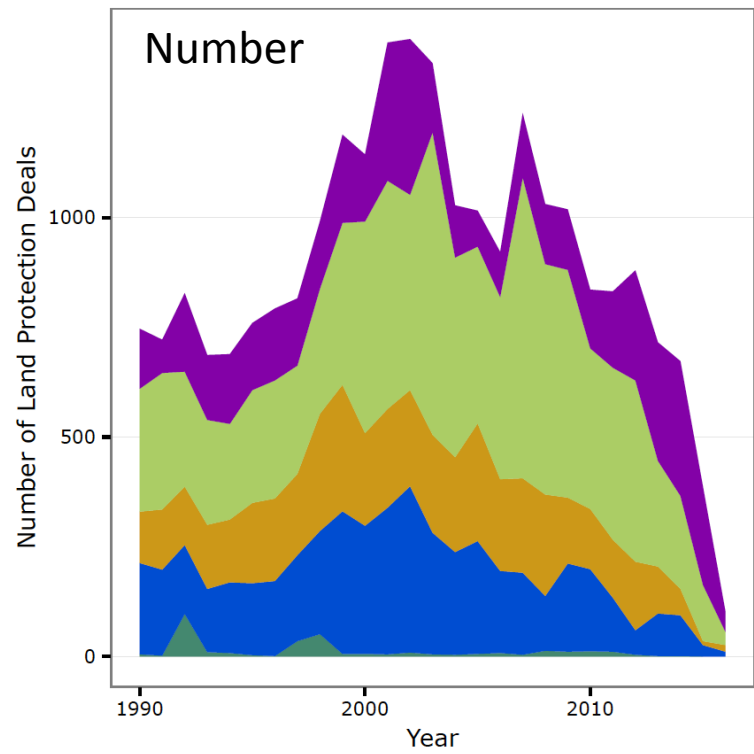
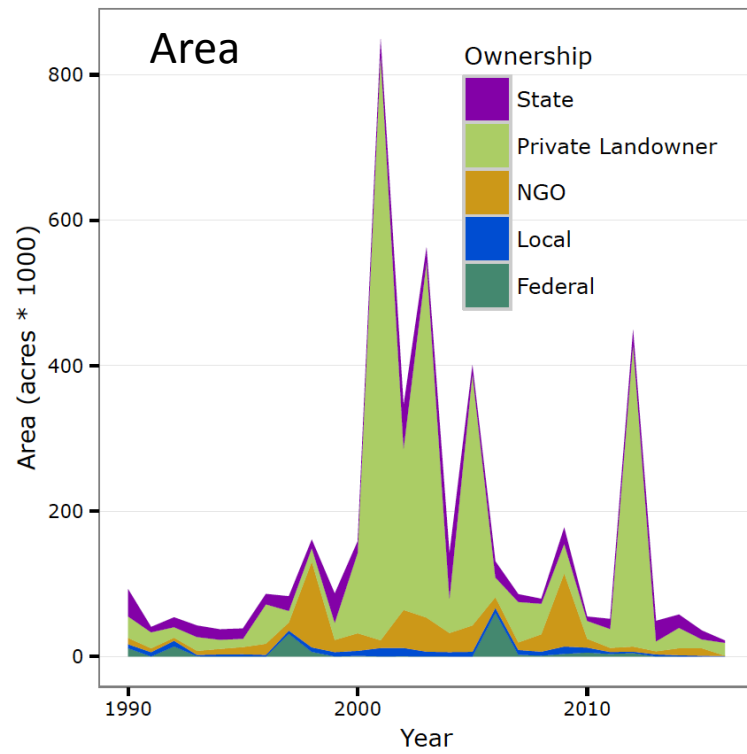
Percent of Forest Conserved by State

50% Since 1990

73% by easement since 1990

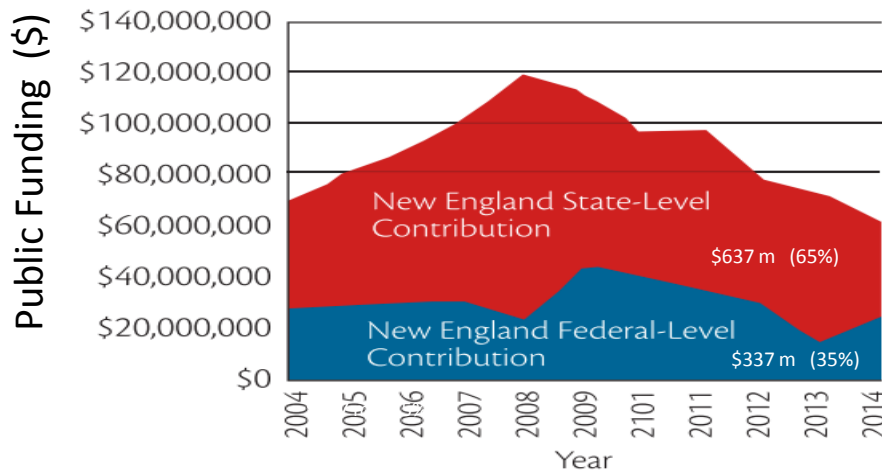




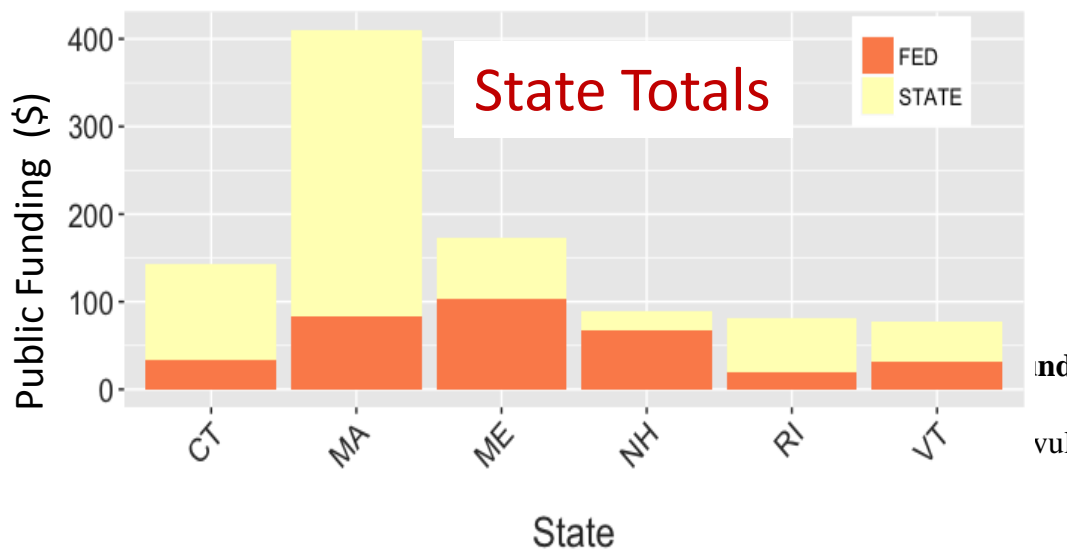




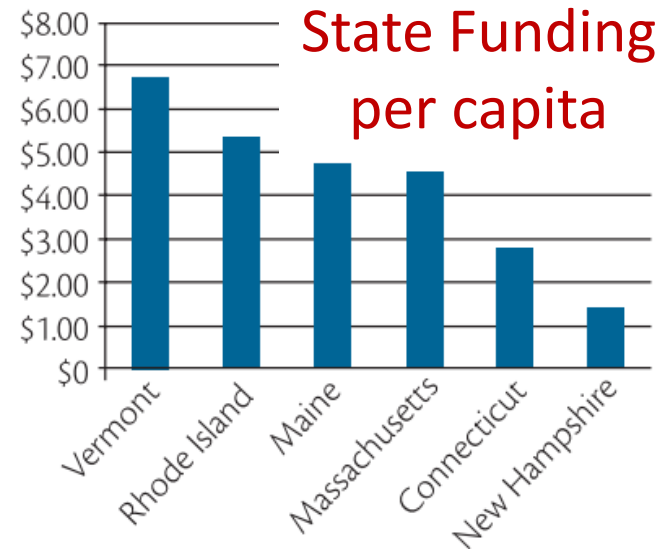
## Combined State and Federal Funding for Land Conservation – New England



Public Funding for Land Protection is Highly Variable and Declining



Average Annual Per Capita Spending (\$)

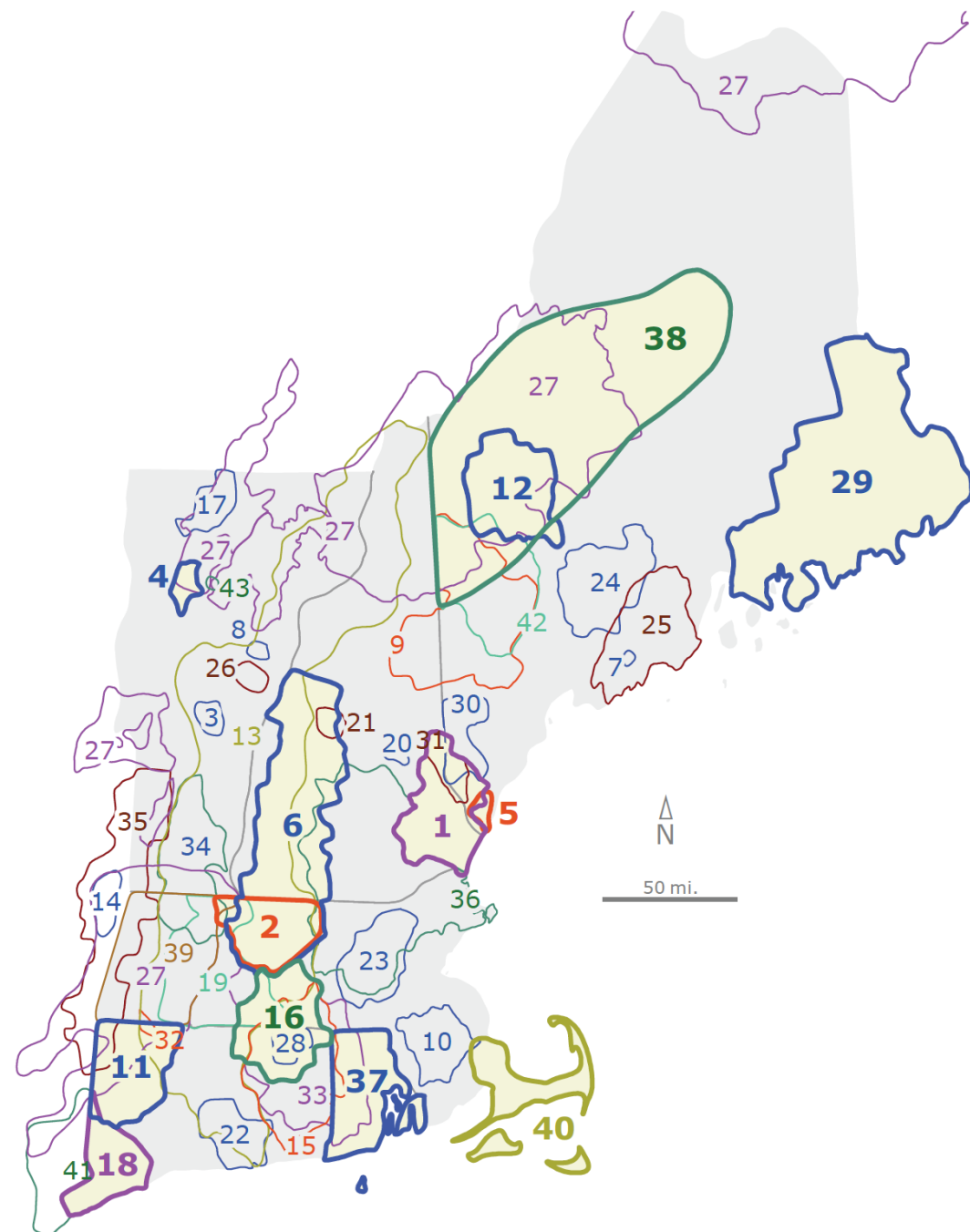






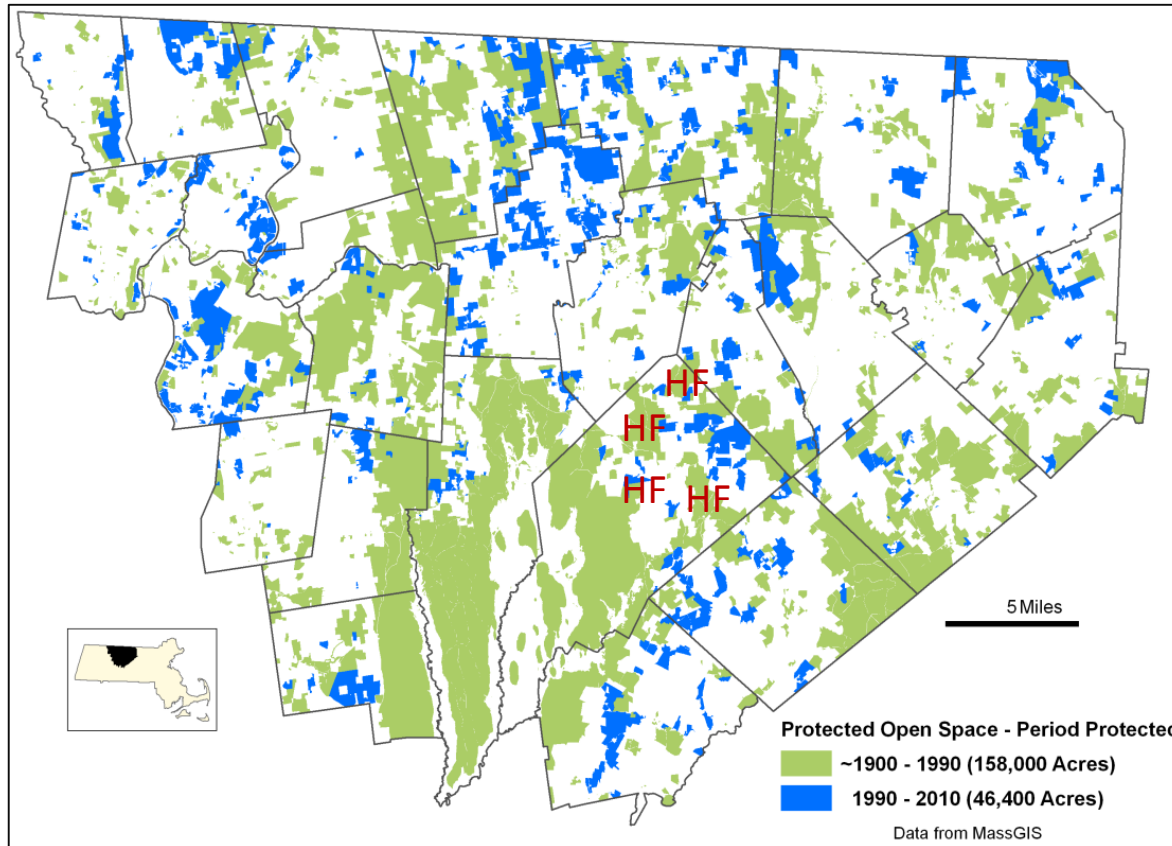


# Regional Conservation Partnerships -- Collaboratives Advancing Land Conservation



- 1 - Great Bay Resource Protection Partnership
- 2 - North Quabbin Regional Landscape Partnership
- 3 - Chateaugay No Town Conservation Project
- 4 - Chittenden County Uplands Conservation Project
- 5 - Mt. Agamenticus to the Sea Conservation Initiative
- 6 - Quabbin to Cardigan Partnership
- 7 - River-Link
- 8 - Orange County Headwaters Project
- 9 - Upland Headwaters Alliance
- 10 - Resilient Taunton Watershed Network
- 11 - Litchfield Hills Greenprint Collaborative
- 12 - High Peaks Initiative
- 13 - Friends of the Silvio O. Conte National Fish and Wildlife Refuge
- 14 - Rensselaer Plateau Working Forest Initiative
- 15 - Thames River Basin Partnership
- 16 - Mass-Conn Sustainable Forest Partnership
- 17 - Cold Hollow to Canada Forest Link Project
- 18 - Fairfield County Regional Conservation Partnership
- 19 - Forever Farmland Initiative
- 20 - Belknap Range Conservation Coalition
- 21 - Newfound Land Conservation Partnership
- 22 - Lower CT River and Coastal Region Land Trust Exchange
- 23 - West Suburban Conservation Council
- 24 - Kennebec Woodland Partnership
- 25 - 12 Rivers Conservation Initiative
- 26 - Taylor Valley Conservation Project
- 27 - Staying Connected Initiative
- 28 - Quiet Corner Initiative
- 29 - Downeast Conservation Network
- 30 - Forest Works!
- 31 - Salmon Falls Watershed Collaborative
- 32 - Sandy Brook Conservation Corridor
- 33 - Southern New England Forest Heritage Partnership
- 34 - MA-VT Woodlands Partnership
- 35 - Berkshire-Taconic Regional Conservation Partnership
- 36 - Merrimack Conservation Partnership
- 37 - Rhode Island Woodland Partnership
- 38 - Maine Mountain Collaborative
- 39 - Berkshire Wildlife Linkage Partnership
- 40 - Massachusetts Coastal Pine Barrens Partnership
- 41 - Hudson to Housatonic Regional Conservation Partnership
- 42 - Maine West
- 43 - Shutesville Hill Wildlife Corridor Project

# North Quabbin Regional Landscape Partnership



- Founded in 1997 – Led by Mount Grace Land Conservation Trust
- 26 towns
- 22 Active partners
- Land protection through
- Outreach and training to land owners, foresters, towns etc.





# ALPINE

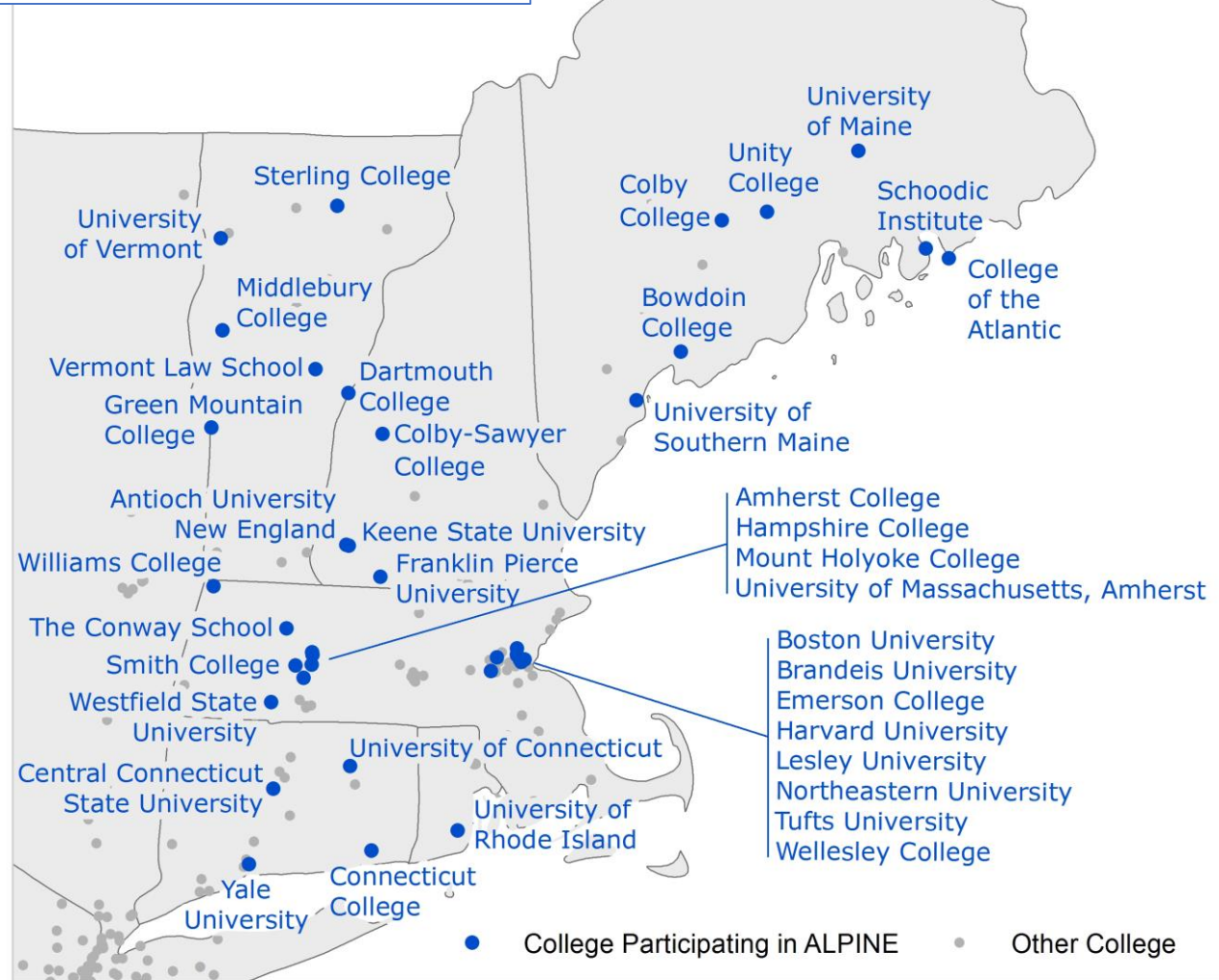
ACADEMICS FOR LAND PROTECTION IN NEW ENGLAND



50 mi.

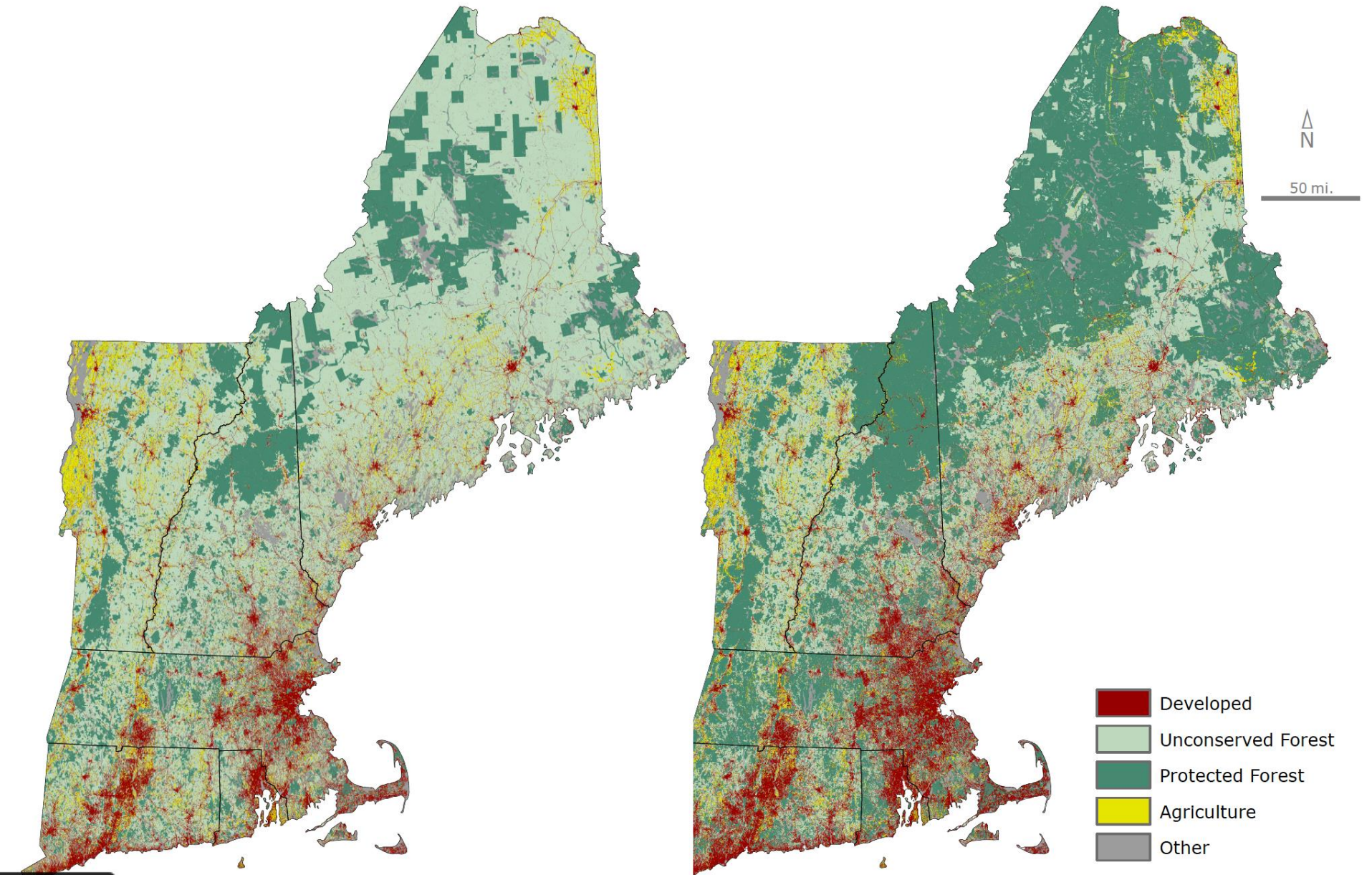
## The Four Pillars of ALPINE

- Faculty and Staff
- Students
- Administration
- Alumni



11.00 x 8.50 in

50 mi.

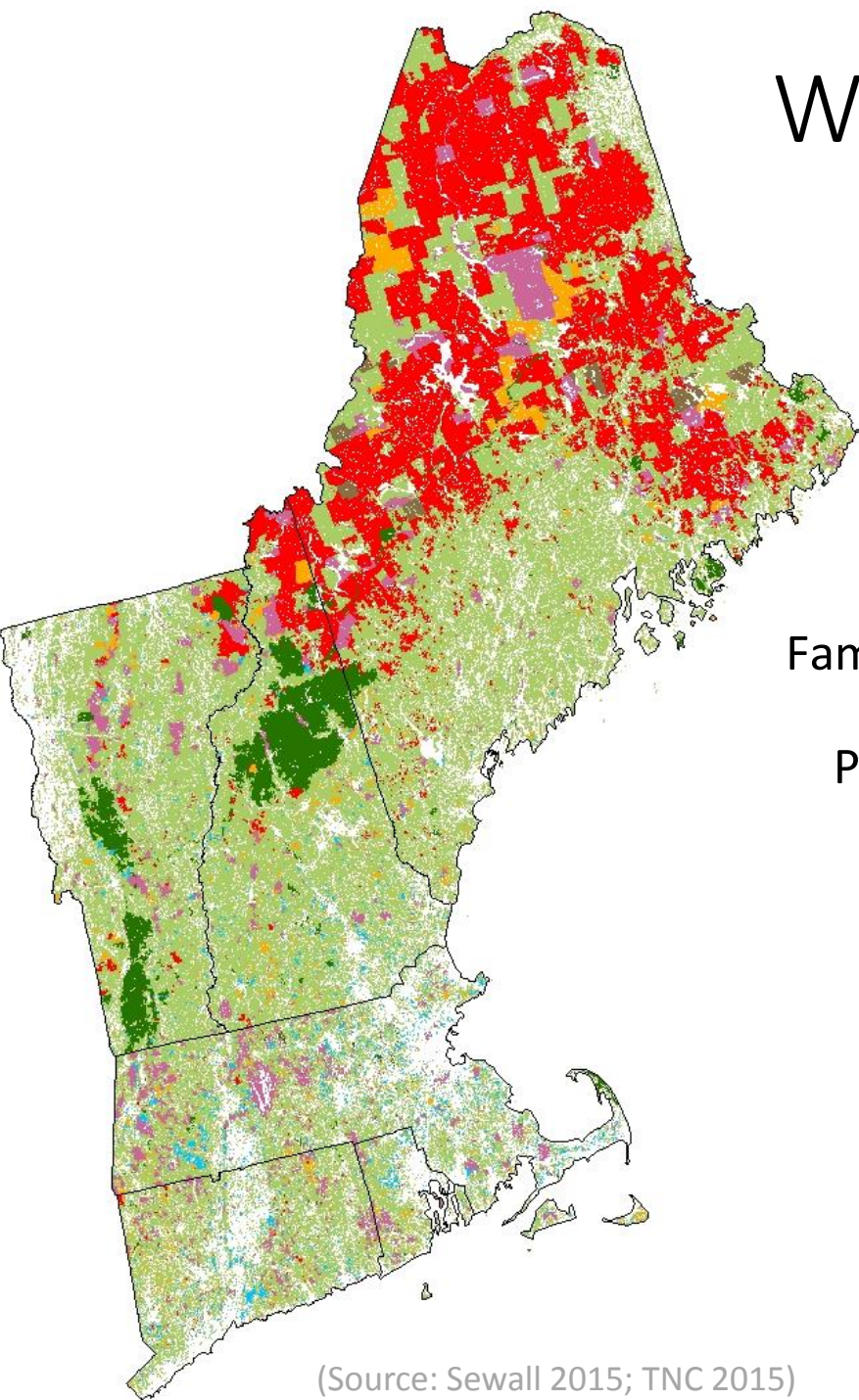


- Developed
- Unconserved Forest
- Protected Forest
- Agriculture
- Other



# WHO OWNS NEW ENGLAND'S FORESTS?

214,000 Forest Land Owners  
With more than 10 acres  
Own 12.2 million acres



Family Forest Owner

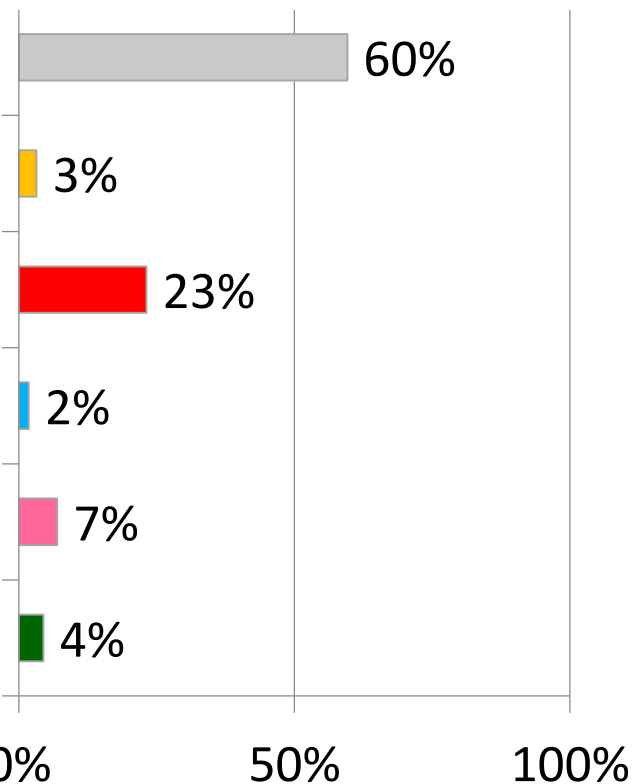
Private Non Profit

Corporate

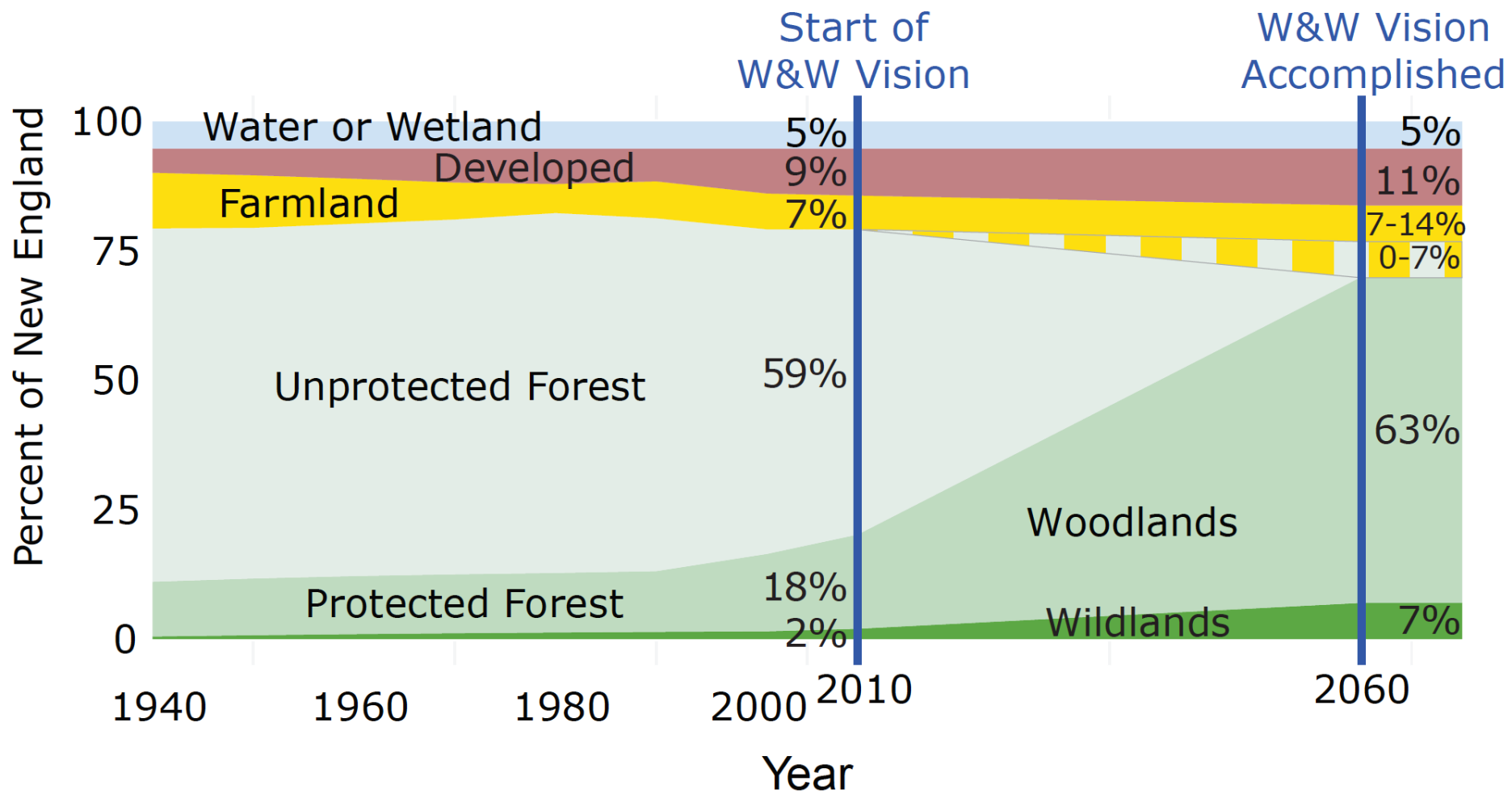
Municipal

State

Federal



(Source: Sewall 2015; TNC 2015)





DEVELOP

